



DISCOVERY RIDGE ELEMENTARY

DRE WEEKLY NEWS: OCTOBER 28, 2024

SPECIAL AREA SCHEDULE



Monday - Day 4

Tuesday - Day 5

Wednesday - No School Parent Teacher Conferences

Thursday - No School

Friday - No School

IMPORTANT DATES

10/28-10/30

Red Ribbon Week

10/29

Fall Picture Retake Day

Student Led Parent Teacher Conferences from 4:30 pm-8 pm

PTO At Home Movie Night Begins

10/30

No School, Fall Break 10/30-11/5

Student Led Parent Teacher Conferences from 10 am-8 pm

11/14

PTO Dine Out at Texas Roadhouse from 3:30 pm-10 pm

11/18

Late Start at 10:35, you may start dropping students at 10:20

11/27-11/29

Thanksgiving Break

Academic Calendars (2024-2025, 2025-2026)

STUDENT LED PARENT TEACHER CONFERENCES

Please Save the date for DRE Student Led Conferences, October 29-30.

We are excited to share that this year our parent-teacher conferences will be led by your child. Please be sure to plan accordingly when scheduling as all K-5 students should attend. We are so excited for our students to share their goals, celebrate their accomplishments, and reflect on how they can keep growing. Sign-ups for a 20-minute session with your child and their teacher and more information will be coming soon!

Please watch for information on conference sign ups if you haven't already selected a time with your child's teacher.



Blast off to a drug-free future!

Let's celebrate **RED RIBBON WEEK** with some "out of this world" spirit days!

Monday, October 28 ~ GALACTIC GLAMOUR DAY

****Wear outfits with stars or your DRE spirit wear**

Tuesday, October 29 ~ CRAZY SOCK DAY

****Wear crazy socks**

Wednesday, October 30 - Sunday, November 3 ~ DRE's At-Home Movie Nights



DRE is accepting donations of new socks for Socktober Sock drive!
Donations will be collected through Oct. 25



RED Ribbon Week

Let's celebrate Red Ribbon Week with some "out of this world" spirit days!

-Monday, October 28- GALACTIC GLAMOUR DAY

****Wear outfits with stars or your DRE spirit wear**

-Tuesday, October 29- CRAZY SOCK DAY

****Wear crazy socks**

-Wednesday, October 30-Sunday, November 3-

****DRE's At-Home Movie Nights**

DAILY CLASSROOM SNACKS

Students at Discovery Ridge have an opportunity for a home provided daily snack in their classroom. If providing a daily snack creates a hardship for your family, please reach out to your child's counselor.

K-2 Counselor, Mrs. Stacy Browning

stacybrowning@wsdr4.org

3-5 Counselor, Mrs. Jane Douglas

janedouglas@wsdr4.org



iReady Diagnostic Reports

iReady Assessments

- i-Ready is an integral part of our curriculum for reading and mathematics. It enables your student's teacher(s) to identify their specific needs, personalize their learning, and track their progress throughout the school year. By meeting your student exactly where they are, i-Ready empowers your teacher(s) to enhance your student's learning gains. Typically, students take iReady assessments several times throughout a school year. Updated For Families Reports are viewable at the end of each testing period.

How can I access my student's For Families Report results?

1. **Log in** to your student's **i-Ready Dashboard** with the following directions:

- From a computer, click [ClassLink](#).
- Log in using your student's district credentials (email and password) and then click on the i-Ready icon. Your child's email is firstlastnameegradyear@wsdr4.org and password is their wsdlunchpin.

Example: JohnDoe23@wsdr4.org; PW: wsd12345

- Your student's lunch pin can be found in Focus. If needed, contact their teacher for assistance.
- Click on the **For Families dropdown** and **select** the **For Families** report.
 - Enter** your District's 2024-25 Report **Code:50W8JN**.
 - You can choose both **reading** and **math** to view both reports for your student
 - Your computer may have pop-ups blocked, and you will have to allow these to view the reports.

iReady Diagnostic Reports

LUNCH TIMES BY GRADE LEVEL

Kindergarten- 11:15 am

1st Grade- 11:25 am

2nd Grade- 10:50 am

3rd Grade- 12:40 pm

4th Grade- 12:15 pm

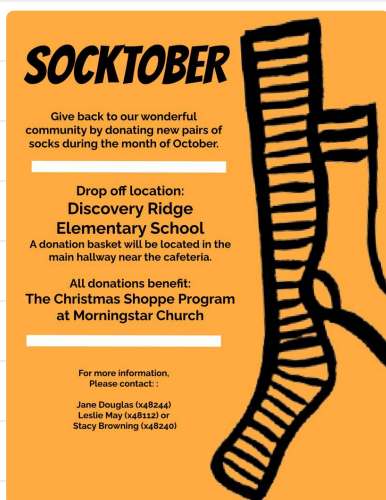
5th Grade- 11:50 am

21 Mon	22 Tue	23 Wed	24 Thu	25 Fri
Banana Bread	Cinnamon Toast Crunch French Toast	Dutch Waffle	Mini Cinni's	Froot Loop Waffles
Fresh Fruit	Fresh Fruit	Fresh Fruit	Fresh Fruit	Fresh Fruit
Choice of Milk or Juice	Choice of Milk or Juice	Choice of Milk or Juice	Choice of Milk or Juice	Choice of Milk or Juice

21 Mon	22 Tue	23 Wed	24 Thu	25 Fri
Chicken Patty on Bun	Toasted Ravioli W/marinara	3-Cheese Cavatappi	Walking Taco	Gourmet Grilled Cheese
Oven Baked Fries	Savory Green Beans	Steamed Broccoli	Seasoned Black Beans	Baby Carrots
Fresh Fruit	Fresh Fruit	Fresh Fruit	Fresh Fruit	Fresh Fruit
Choice of Milk or Juice	Choice of Milk or Juice	Choice of Milk or Juice	Choice of Milk or Juice	Choice of Milk or Juice

Breakfast & Lunch Menu

SOCKTOBER



Give back to our wonderful community by donating a new pair of socks during the month of October.

You can drop them off in a donation basket at DRE located next to the cafeteria.

All donations will help benefit The Christmas Shoppe Program at Morning Star Church.

VETERANS DAY OBSERVANCE

We are excited to honor Veterans on November 11! You can sign up and submit pictures by clicking on form the below or scan the QR code on the flyer.



Veterans Day 2024

The form Veterans Day 2024 is no longer accepting responses.
Try contacting the owner of the form if you think this is a mistake.

Google Forms

This form was created inside of Wentzville R-IV School District.



Veterans Day Sign Up

PARENT TEACHER ORGANIZATION 'PTO' NEWS

Join PTO

DRE Spirit Wear Store

FALL MOVIE NIGHT

Don't forget to register for our Fall At Home Movie Night for your chance to win a Movie Night Prize Pack delivered to your porch!

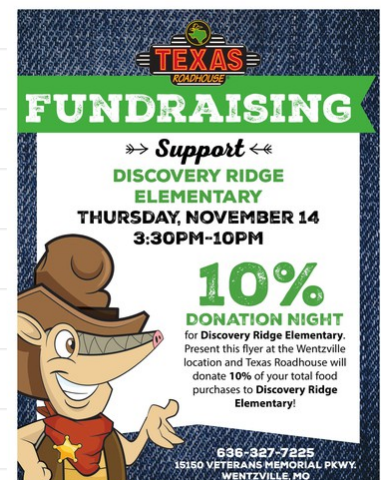
The teacher with the most registered families will win a prize too!!



Register to Win a Movie Prize Pack!

DRE PTO DINE OUT NIGHT

Thursday, November 14 from 3:30 pm-10 pm DRE PTO is dining out at Texas Roadhouse in Wentzville! 10% of your food purchase will go to help DRE, we look forward to seeing everyone there!



PTO PANGAKES WITH PRINCIPALS

It may seem early but we are already thinking about our Pancakes with Principals event on Fri. Dec. 13!

If you are looking for an easy way to help out, consider donating a package of hot chocolate or marshmallows! We have about 1/2 of what we need for our event!!

We will be raffling off a "Gift Card/Lotto Tree" with proceeds supporting some of our building's Student Service Learning Projects. We are asking for ANY gift cards of \$5 or more or Lotto Scratch-Off Tickets.



You can sign up to donate for either of these by clicking on the flyer and scanning the QR Code or by clicking the button below!

Donate Hot Chocolate/Marshmallows

Donate Gift Cards/Lotto Tickets

FALL 2025 KINDERGARTEN SCREENINGS

Does your Child Start Kindergarten next fall? If so, you can register them for a Kindergarten screening by scanning the QR Code or selecting the button below.



Kindergarten Screening

COMMUNITY AGENCY PRESENTATIONS

Dear Discovery Ridge Elementary Family,

Throughout the duration of the academic year, the Wentzville School District partners with community agencies that specialize in providing students, families, and educators with preventative education. Agency presenters are credentialed, coordinated through the District, and under the supervision of building administrators. Presentation topics are targeted toward specific grade levels. All students will participate in each program unless you choose to opt your child out of the lesson(s). If you are interested in opting your student(s) out of the presentation(s), please click the appropriate link(s) below.

[Kindergarten Opt-Out Form](#)

[First Grade Opt-Out Form](#)
[Second Grade Opt-Out Form](#)
[Third Grade Opt-Out Form](#)
[Fourth Grade Opt-Out Form](#)
[Fifth Grade Opt-Out Form](#)

If you have additional questions, please reach out directly to your student's guidance counselor.

Thank you,

Mrs. Kelly Stratman, Principal
Dr. Lindsay Burkemper, Assistant Principal
Mrs. Stacy Browning, K-2 Counselor
Mrs. Jane Douglas, 3-5 Counselor
Mrs. Sarah Holcomb, Education Support Counselor

READING SUCCESS PLANS

Reading Success Plans are required by Missouri legislation (Section 167.645, RSMo) for identifying students who have a substantial reading deficiency or are at risk for reading difficulties as early as possible. Once identified, teachers and reading interventionists can provide instructional support targeted to student needs, to monitor student progress and adjust instruction as needed. We are required by the state to collect and submit RSP data every February, beginning in the 23-24 school year and continuing this year.

Reading Success Plans

Missouri statute Section 167.645, RSMo (R 160) requires school districts to conduct a foundational reading assessment as well as a diagnostic screening annually. The Missouri Department of Elementary and Secondary Education (DESE) has approved Ready as a Missouri Foundational Reading Assessment and a diagnostic screening tool.

Missouri's Foundational Reading Assessment helps identify students who may have some reading difficulties. Students are assessed in the areas of phonemic awareness, phonics, vocabulary, fluency, and comprehension using i-Ready. The results of this assessment will help identify students who are in need of a Reading Success Plan (RSP).

If students are identified as at risk or having substantial reading deficits, a Reading Success Plan will be created to identify areas to improve in. This is a document to help us all support students in the area of reading in the classroom and/or reading intervention groups. Once identified, teachers and reading interventionists can provide instructional support targeted to student needs, monitor student progress, and adjust instruction as needed.

Attached is our template for the Reading Success Plan process. Families can view at home reading resources at www.dese.mo.gov/EL/EL/2023/2024/2023-24-2024-25/2023-24-2024-25



- STEP 1**
All students take the Ready Reading Diagnostic and i-Ready 3-5 Lexia diagnostic tests in December.
- STEP 2**
Teachers determine which students need a Reading Success Plan based on the data from i-Ready.
- STEP 3**
Classroom and Intervention Services are notified through i-Ready. If a student is identified as needing a Reading Success Plan, teachers will receive the plan and the i-Ready data, a parent teacher conference on October 25, 2023.
- STEP 4**
If a student is needing a Reading Success Plan, teachers will receive a copy of it, along with the i-Ready data, at a parent teacher conference on October 25, 2023.
- STEP 5**
Students with a Reading Success Plan will receive targeted interventions in the areas of phonics, reading fluency and be monitored to ensure progress throughout the school year.

This fall, teachers and reading interventionists will be conducting reading assessments with all students. These assessments help us plan lessons and identify students who might benefit from extra reading support. In addition, our building reading specialists will work with small groups of students. These flexible groupings are not the same as Reading Intervention, families will be contacted directly by their child's teacher if he/she qualifies for Reading Intervention.

If you have any questions, please feel free to reach out to your child's classroom teacher.

LeaderinMe.

Welcome to *Leader in Me*

Each new school year brings opportunities for academic growth and growth in all areas of development. Although children must be knowledgeable when they graduate, they must also be healthy, engaged, responsible, and caring people.

We're grateful you're here at our school and we're excited to partner with you and your child. As a *Leader in Me* School, we believe that every member of your family has greatness and we can't wait to learn and grow from you! *Leader in Me* (LiM) is an evidence-based, comprehensive school-improvement model—developed in partnership with educators and FranklinCovey—that empowers students with the leadership and life skills they need to thrive in a global community.

Our school has chosen to operate through a uniquely different lens. *Leader in Me* is about empowering your child to reach their full potential while ultimately finding their voice. As a school, the staff in this building have made five core commitments to your child. We call these our Core Paradigms. In these paradigms you will find the belief and way we view all students. At this school we see that:

- Everyone is a leader.
- Everyone has genius.
- Change starts with me.
- We empower students to lead their own learning.
- Educators and families partner to develop the whole person.

Not only do these paradigms apply to your student, they apply to all of us!

Leader in Me provides our school with the vision and language to lead the school in a way that addresses all areas of development. As each child discovers and develops their unique gifts and talents, they are given opportunities to lead.

As leaders, they become active, engaged partners in their own education, and their self-confidence, responsibility, and initiative grows. The children quickly understand the benefits of different gifts and talents; they learn to listen to new ideas, work together to achieve results, and motivate one another to be the best.

We hope your school enjoys sharing these new opportunities. Together, we will see each child grow throughout the year.

Mrs. Kelly J. Stratman, Principal

Dr. Lindsay Burkemper, Assistant Principal

COUNSELORS CORNER



10 Tips for Parenting Anxious Kids - Child Mind Institute

How to support children who are anxious. Protecting them from things they fear makes anxiety worse. Instead, express confidence that they can handle it.

childmind.org



Discovery Ridge Elementary



2523 Sommers Road
O'Fallon, MO 63368
636.561.2354